

Dansk Skalform A/S

modern castings



Small, thin-walled complicated castings up to 25 kg
Shell Mould and Lost-Wax Process

Automotive Parts



Rotor – EN-GJS 600-5



EGR Valves – Nirest -
85 versions Shellmould



Exhaustpart for
dobbeltturbo – Volvo



Pumpwheel - Voith



Air-inlet - BMW



Air-inlet - Audi Q7 Hybrid



Exhaust parts – 1.4849



Cylinder- Yamaha - En-GJS-400-15



EN-GJS-500-7



Coreproduction Audi V6 3.0 TDI



8 x Automatic shellmoulding
lines



5 x Pouringline
lines

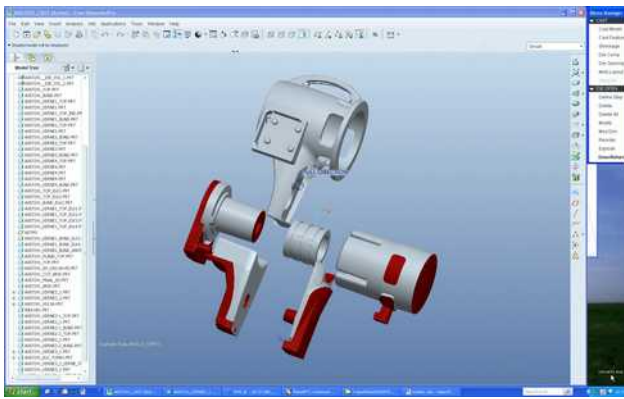
Automotive parts



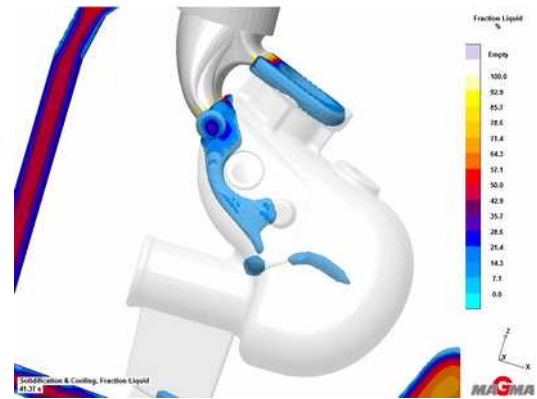
Turbo Exhaust parts - EN-GJS-XSiMo 5.1 – Shellmould



Gearbox parts – 1.7321 LostWax



Creo CAD/CAM



Magmasoft - Simulation

Data

- Founded in 1975
- 70 employees
- Private owners
- 3D CMM with CAD interface
- 3D ZEISS scan with CAD interface
- AL, GGG, Steel, AL-Bronze, Stainless
- 2 Plants ~ 14.000 m²
- Patternshop with modern Cad/Cam-software - Pro/E and Cimatron
- 10 Robot-productionlines
- Casting-simulation - Magmasoft
- Sand-coating plant
- ISO9001:2000; LRQA-Nr 961178

References

- Daimler AG
- Pierburg AG (Audi, BMW, VW)
- Volvo
- Renault
- Scania
- Poclain Hydraulics (MAN, Caterpillar)
- Voith Turbo GmbH
- Knorr Bremse AG
- Parker Hannifin AB
- Bosch Rexroth
- SMTG (Porsche)
- Grainger & Worrall Ltd
- ABB (Worldwide)
- Rolls-Royce AS
- Thule Trailers
- Johnson Controls Inc.

Dansk Skalform A/S - Birkevej 59 - DK-9600 Aars

www.skalform.dk

mail@skalform.dk

Phone +4598621722

