

# Dansk Skalform A/S

modern castings



Small, thin-walled complicated castings up to 25 kg  
Shell Mould and Lost-Wax Process

## Shell moulded Parts



Rotor – EN-GJS 600-5



EGR Valves – Nirest -  
85 versions Shellmould



Exhaustpart for  
doubleturbo – Volvo



Pumpwheel - Voith



Forklift - Atlet



Bronze-parts



Exhaust parts – 1.4849



Cylinder- Yamaha - En-GJS-400-15



EN-GJS-500-7



8 x Induction furnaces



Automatic gating cutting



5 x Pouringline

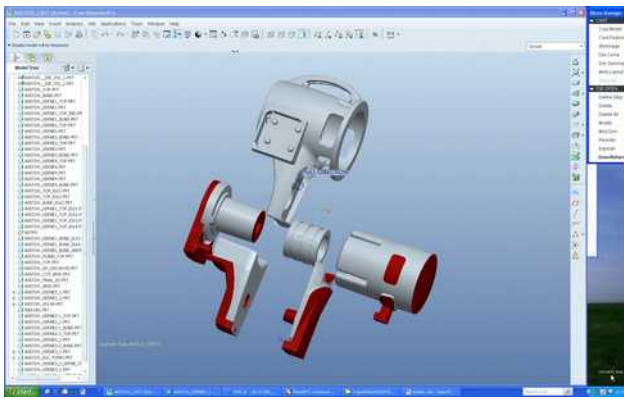
## Shellmoulded parts



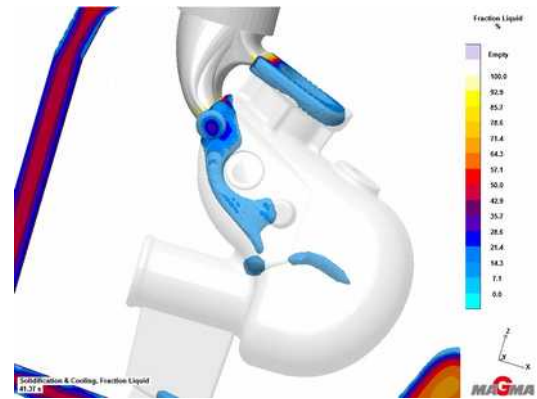
Turbo Exhaust parts - EN-GJS-XSiMo 5.1



Ductile-iron parts



Inhouse Tool Shop with Creo CAD/CAM



Magmasoft - Simulation

## Data

- Founded in 1975
- 70 employees
- Private owners
- 3D CMM with CAD interface
- 3D ZEISS Scan with CAD interface
- AL, GGG, Steel, AL-Bronce, Stainless
- 2 Plants ~ 14.000 m<sup>2</sup>
- Patternshop with modern Cad/Cam-software - Pro/E and Cimatron
- 10 Robot-productionlines
- Casting-simulation - Magmasoft
- Sand-coating plant
- ISO9001:2000; LRQA-Nr 961178

## References

- ABB (Worldwide)
- Brenderup Trailers
- Bosch Rexroth
- Danish Railways
- Daimler AG
- Grainger & Worrall Ltd
- Knorr Bremse AG
- Johnson Controls Inc.
- McLaren
- Mahle Powertrains
- Parker Hannifin AB
- Pierburg AG (Audi, BMW, VW)
- Renault
- Rolls-Royce AS
- Scania
- Siemens
- Poclain Hydraulics (MAN, Caterpillar)
- Porsche
- Volvo
- Voith Turbo

Dansk Skalform A/S - Birkevej 59 - DK-9600 Aars

[www.skalform.dk](http://www.skalform.dk)

[mail@skalform.dk](mailto:mail@skalform.dk)

Phone +4598621722

